



FBM BRZ/FRS 270S Fuel Pump Install

Instructions

Full Blown Motorsports

3370 Mike Collins Dr.

Eagan, MN 55121

Ph: 952-431-1399

Fax: 952-431-1409

www.Fullblownmotorsports.com

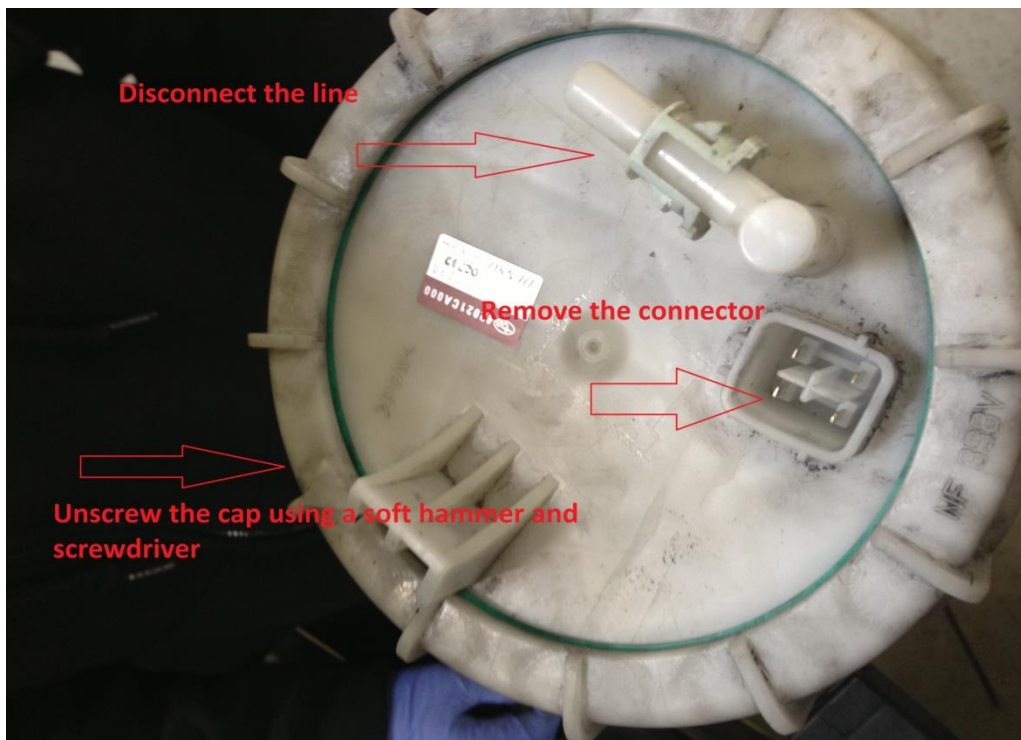
Sales: Sales@fullblownmotorsports.com

Tech: Tech@fullblownmotorsports.com

Step 1: Remove the driver side rear seat.



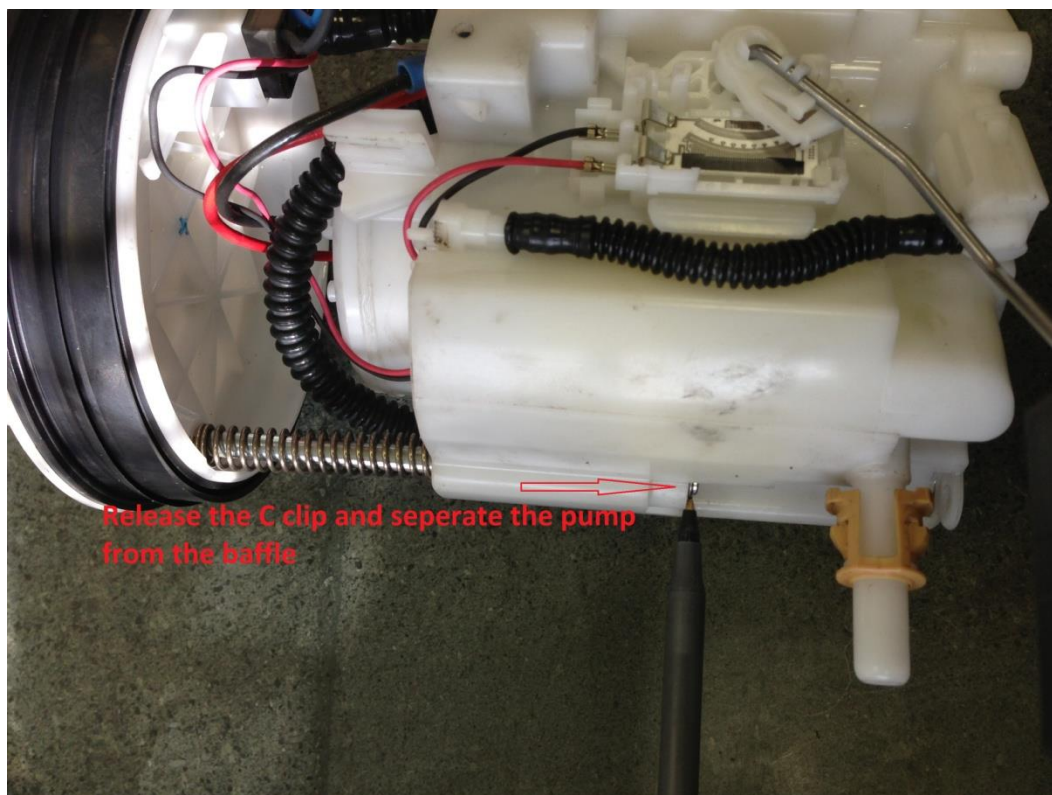
Step 2: Disconnect the fuel line and remove the fuel pump connector. Then unscrew the lid using a flat head screw driver and soft hammer.



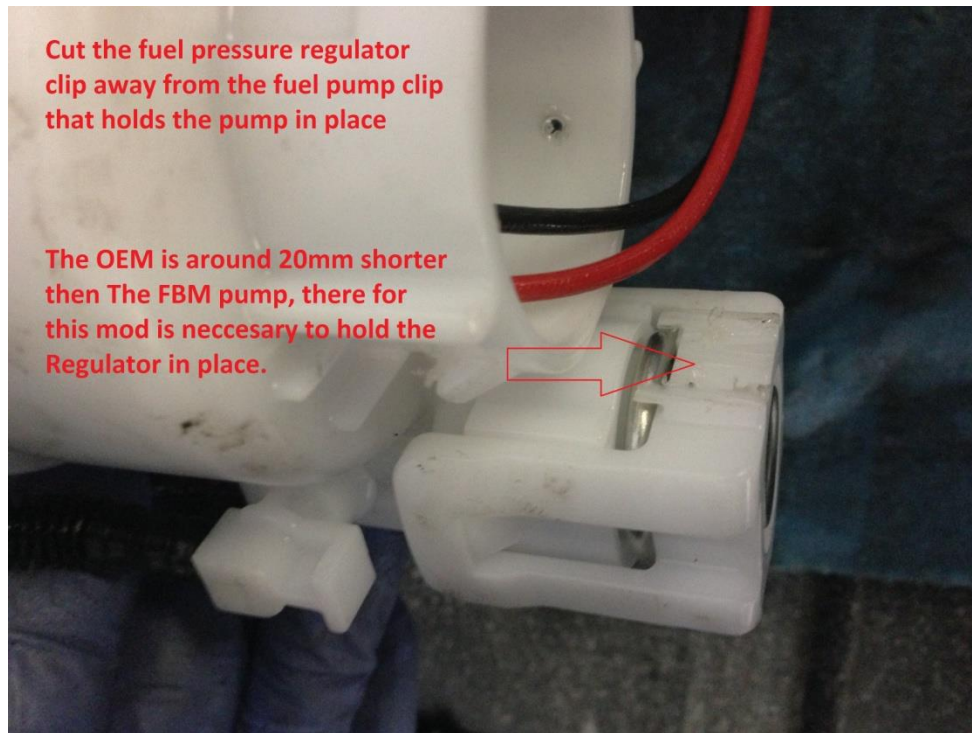
Step 3: Pull up the fuel pump assembly and remove the fuel sender line.



Step 4: Remove the C-clip to separate the fuel pump from the baffle.



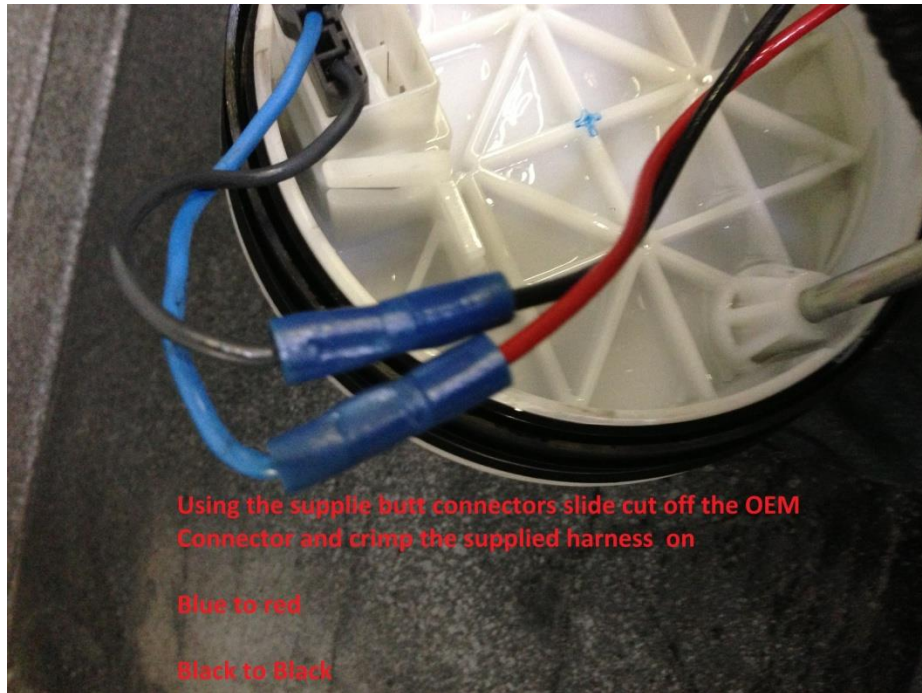
Step 5: You will need to trim down the fuel pressure regulator clip.



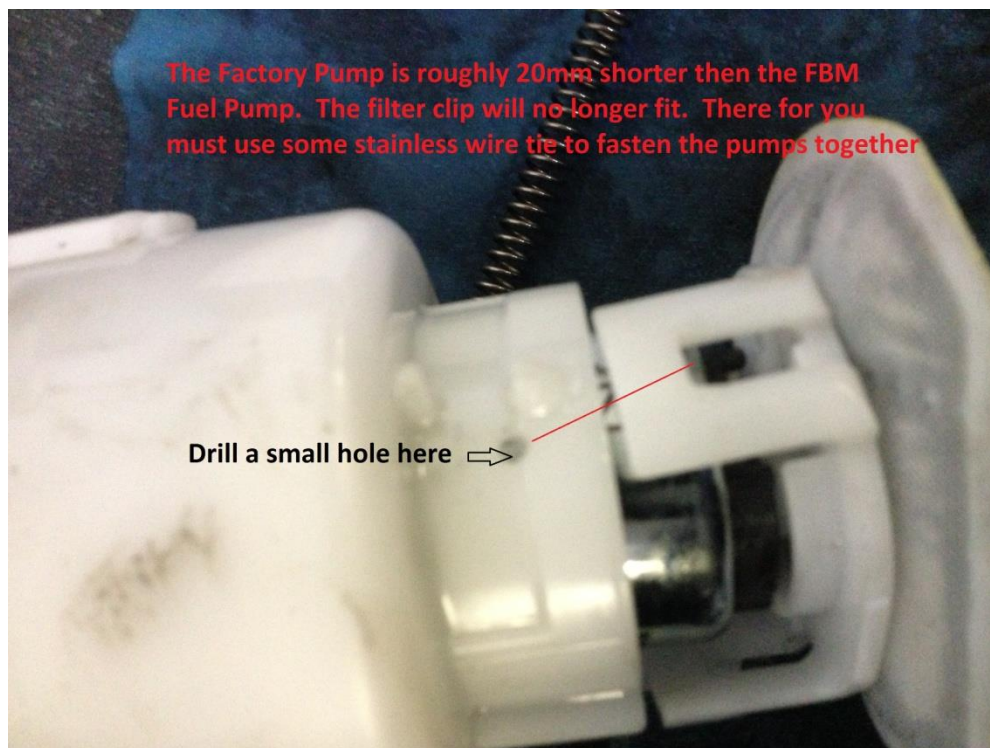
Step 6: Plug the harness into the fuel pump. Reuse the o ring and plastic spacer on the new fuel pump



Step 7: Cut the stock connector and crimp it to the new harness. Red to blue. Black to black



Step 8: The factory fuel pumps are smaller than the 270S pumps, so you will have to modify the filter clip to have it stay in place. You will need to drill some holes in the baffle and use stainless steel tie wire or zip ties to hold the filter in place.



Step 9: Reinstall everything in reverse order.

