

- Keep the lip free from foreign matter.
- Do not apply engine oil to the dust seal section.

(b) Using SST and a hammer, tap in the new oil seal until its surface is flush with the timing chain or belt cover sub-assembly edge.

SST: 09223-22010

NOTICE:

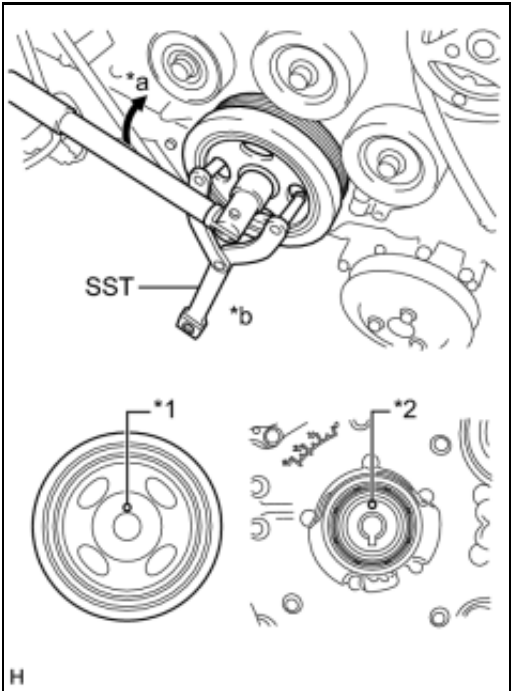
- Do not tap the oil seal at an angle.
- Do not deform the oil seal.

HINT:

Alternatively, the tapping depth of the timing chain cover oil seal can be 0 to -1.0 mm (0 to -0.0394 in.) from the timing chain cover end surface.

38. INSTALL CRANKSHAFT PULLEY

- (a) Install the crankshaft pulley spacer.
- (b) Install a new O-ring to the crankshaft pulley spacer.
- (c) Install the crankshaft pulley while aligning the knock hole of the pulley with the knock pin on the crankshaft pulley spacer.
- (d) Apply engine oil to threads and seat sections of the crank pulley bolt.



(e) Using SST, hold the crankshaft pulley and tighten the crank pulley bolt.

NOTICE:

Be careful not to let SST slip during the work.

Text in Illustration

*1	Knock Hole
*2	Knock Pin
*a	Hold
*b	Turn

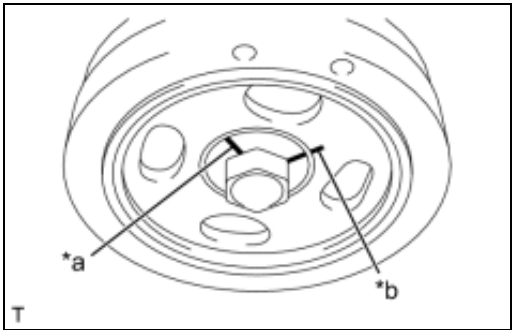
SST: 09960-10010

09962-01000

09963-01000

Torque: 20 N·m (204 kgf·cm, 15ft·lbf)

(f) Using a marker, draw the reference line (A) on the crank pulley bolt and also the reference line (B) on the crank pulley according to the line engraved around the crank pulley bolt head as shown in the illustration.



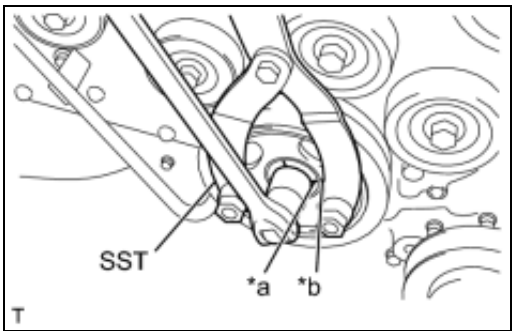
Text in Illustration

*a	Reference Line A
*b	Reference Line B

HINT:

There are carved lines on the crank pulley bolt head every 90°.

(g) Using SST, hold the crankshaft pulley, and tighten the crank pulley bolt by 90° until the reference lines A and B are aligned.



NOTICE:

Be careful not to let SST slip during the work.

SST: 09960-10010

09962-01000

09963-01000

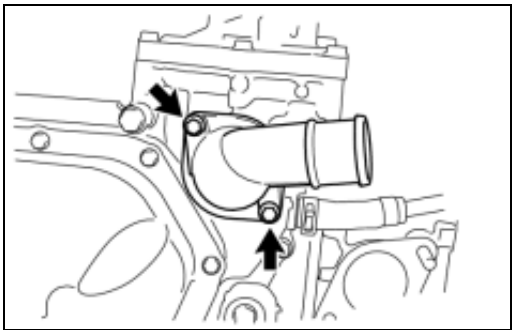
Text in Illustration

*a	Reference Line A
*b	Reference Line B

39. INSTALL THERMOSTAT

(a) Attach a new gasket to the thermostat.

40. INSTALL WATER OUTLET



(a) Install the thermostat and water outlet with the 2 bolts.
Torque: 6.4 N·m (65 kgf·cm, 57in·lbf)

41. INSTALL ENGINE WATER PUMP ASSEMBLY