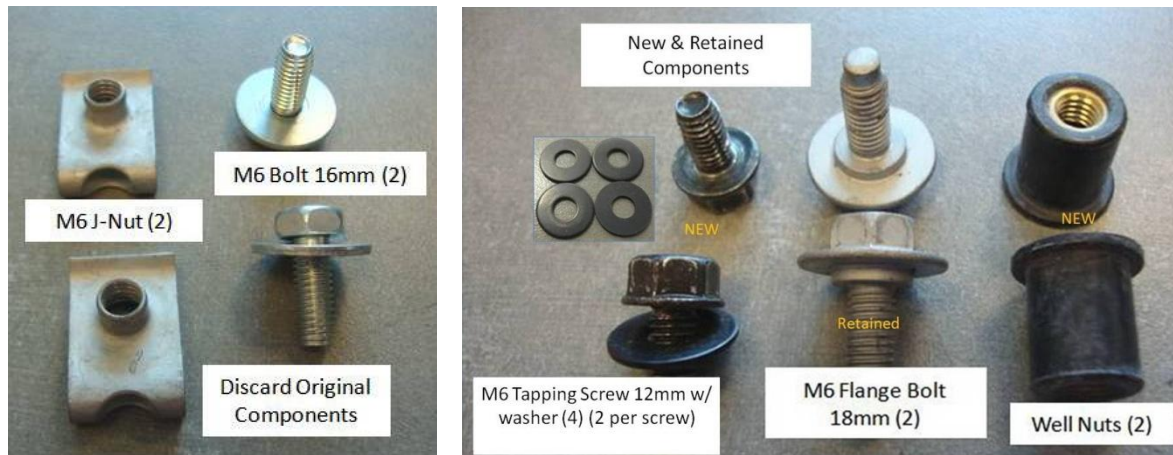


BRZ Front License Plate Installation Instructions (P/N SOA635111)

NOTE; parts needed for this install may be contained in 2 separate packages, assemble needed parts and discard any unused parts.



1. Locate the center line of the front bumper, using the grain angle change as the guide and mark the area using a pencil mark or tape.



2. Using a "T" square, locate the center line of the plate bracket and place a mark.



- Engage the 2 lower hooked areas of the bracket onto the bumper and swing it up into place. Hold the bracket in position against the bumper face, aligning the center lines of bracket and bumper face

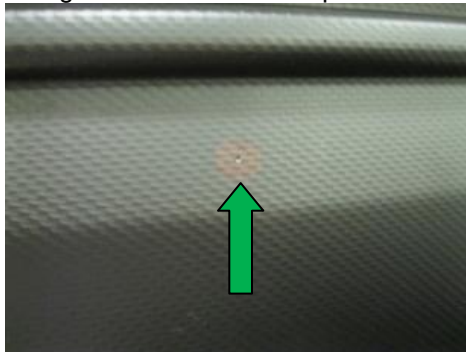


Hook (left and right side)

- Using the bracket as a guide, mark the drilling portion as shown (note drill locations)



- Remove the bracket
- Find the center of the hole markings and make a center punch mark using an awl or suitable tool



- Using a 15/32" drill bit, drill the holes, using caution to not drill into the foam beam behind the bumper face. De burr as needed.



8. Install the Well nuts into the holes: Silicone lubricant may be needed to facilitate installation. The Well nut must fit tightly in the hole.



9. Re-clip the lower hooked end of the bracket and swing it up into position. Hold it against the bumper face.
10. Install the M6-18 flange shoulder bolts and tighten sufficiently to compress the Well nut. Do not over tighten.



11. Install the license plate using an M6-12 tapping screw and washer(s) into the J-nuts on the bracket.

NOTE; it is recommended to use at least 1 rust resistant flat washer (4 included) on each license plate to bracket bolt. More than 1 washer may be needed for thin license plates or to prevent the end of the bolt from making contact with the front bumper fascia and leaving a mark. Stack additional washers or source shorter M6 rust resistant bolts as needed to prevent this.

NEW PARTS:

- (2) License plate to bracket tapping screw, SOA/FHI P/N 904740011 M6-12
- (2) Well nut, Emhart Technologies catalog # 1 / 4 S, P/N 347103 SOA P/N TBD
- (4) Rust Resistant Washer SOA P/N TBD

Read these First!

REVISED INSTALLATION INSTRUCTIONS

Kit includes:

(2) Well Nuts / (2) M6 Bolts (black) / (4) Washers

Read these First!

REVISED INSTALLATION INSTRUCTIONS

Kit includes:

(2) Well Nuts / (2) M6 Bolts (black) / (4) Washers