

# PHANTOM

FULL THROTTLE SUPERCHARGER SYSTEM

1.5 dump battery assembly. Follow steps to prevent accidental short.



Batteries: Two 18AHr, two 9AHr



Using 2" wide filament tape...tape as shown



Bend F2 terminals 180 deg. (black IS bent)



Place series block as shown, press connectors on F2 terminals. Make sure they are seated tight, tape as shown.



Lay a strip of 2" wide filament tape sticky side up...place batteries as shown, tightly together.



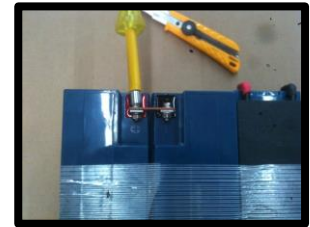
Bring tape around, pull tight.



**Step #1:** Use supplied fasteners that come with batteries. Bolt RED main cable to RED battery terminal...Black to Black. Lockwashers on nut side, Torque down tight.

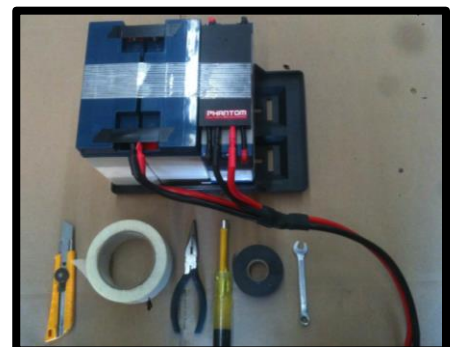


**Step #2:** Press and wiggle on bullet connector. Black to black. Red to red.



**Step #3:** Bolt on copper series connector. lockwashers go on nut side. Torque down tight.

Completed assembly ----->  
Place two pieces of electrical tape over exposed terminals as shown.  
The unit can be moved into the car...  
~35 lbs.



**MSRP: \$ N/A (included with control/charge module)**

\*price is subject to change without notice and subject to applicable taxes.