

ATTENTION:

GENERAL MANAGER ☐
 PARTS MANAGER ☐
 CLAIMS PERSONNEL ☐
 SERVICE MANAGER ☐

IMPORTANT - All
 Service Personnel
 Should Read and
 Initial in the boxes
 provided, right.

**SUBARU**

QUALITY DRIVEN® SERVICE

SERVICE BULLETIN**APPLICABILITY:** 2013MY BRZ**NUMBER:** 12-139-12

SUBJECT: Specification Change to Front Bumper
 Fascia Mounting Brackets

DATE: 09/25/12**INTRODUCTION**

The purpose of this bulletin is to provide information regarding a revision to the design of the front bumper fascia mounting brackets. The change will enhance their retention capability and address issues relating to proper fit.

COUNTERMEASURE IN PRODUCTION

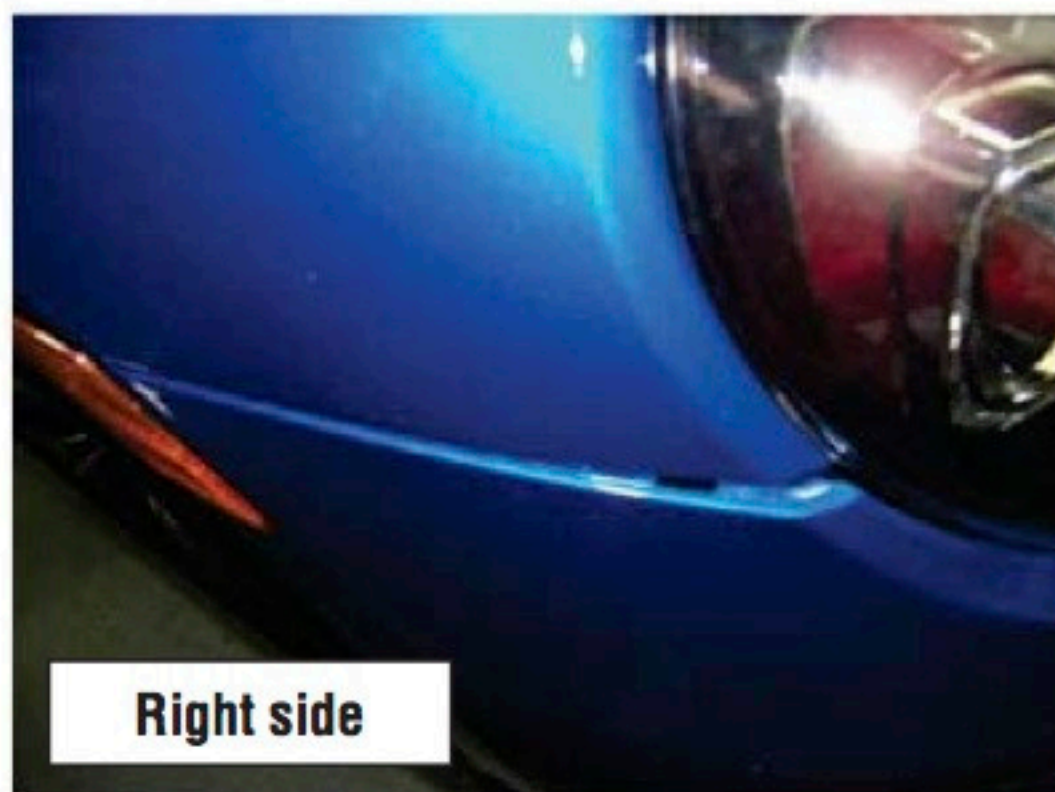
The revised brackets were incorporated into production August 8, 2012 starting with VIN# D*603562.

PART INFORMATION

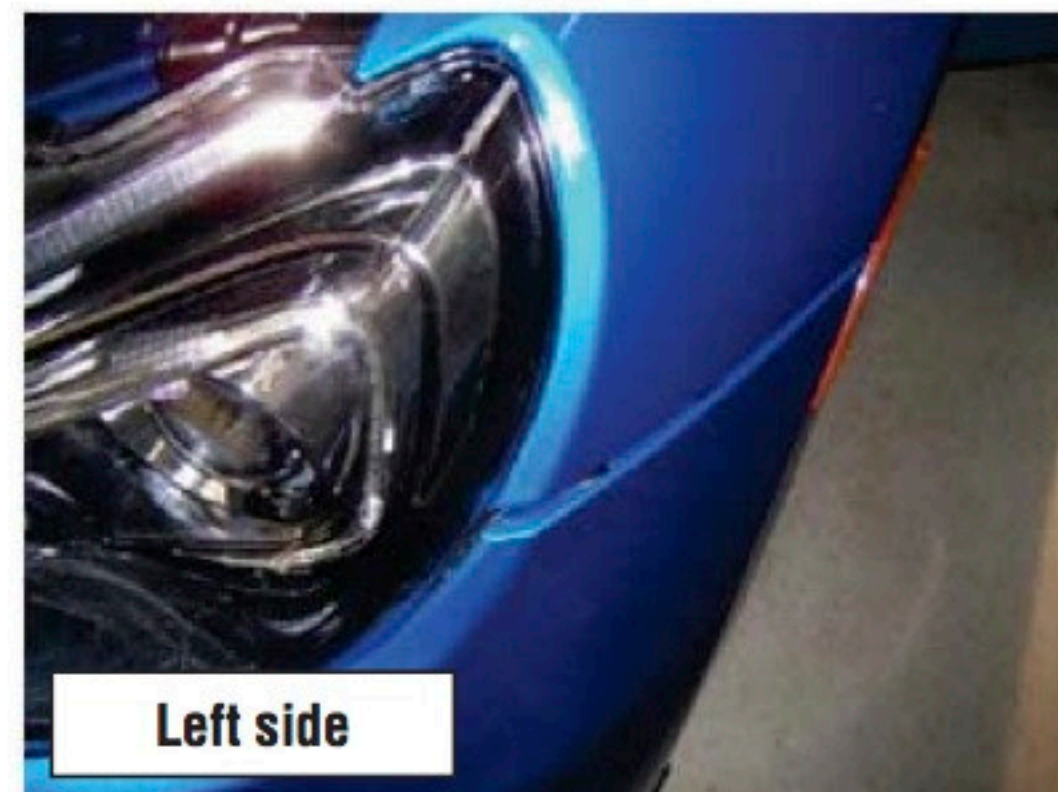
PART NAME	NEW PART NUMBER	OLD PART NUMBER	INTERCHANGEABILITY
Brkt Corner F RH	57707CA001	57707CA000	New to Old ONLY
Brkt Corner F LH	57707CA011	57707CA010	

SERVICE PROCEDURE / INFORMATION

The following photos show examples of incorrect fit of the front bumper fascia when being insufficiently retained by the corner mounting brackets or misaligned with the bracket's mounting tab. In these examples shown below, an excessive fender gap is the result. This condition may occur on bumpers with no damage from impact and should not be confused with bumper pop-out as a result of any impact. Bumpers with impact damage may require replacement in order to be properly secured.



Right side



Left side

Continued...

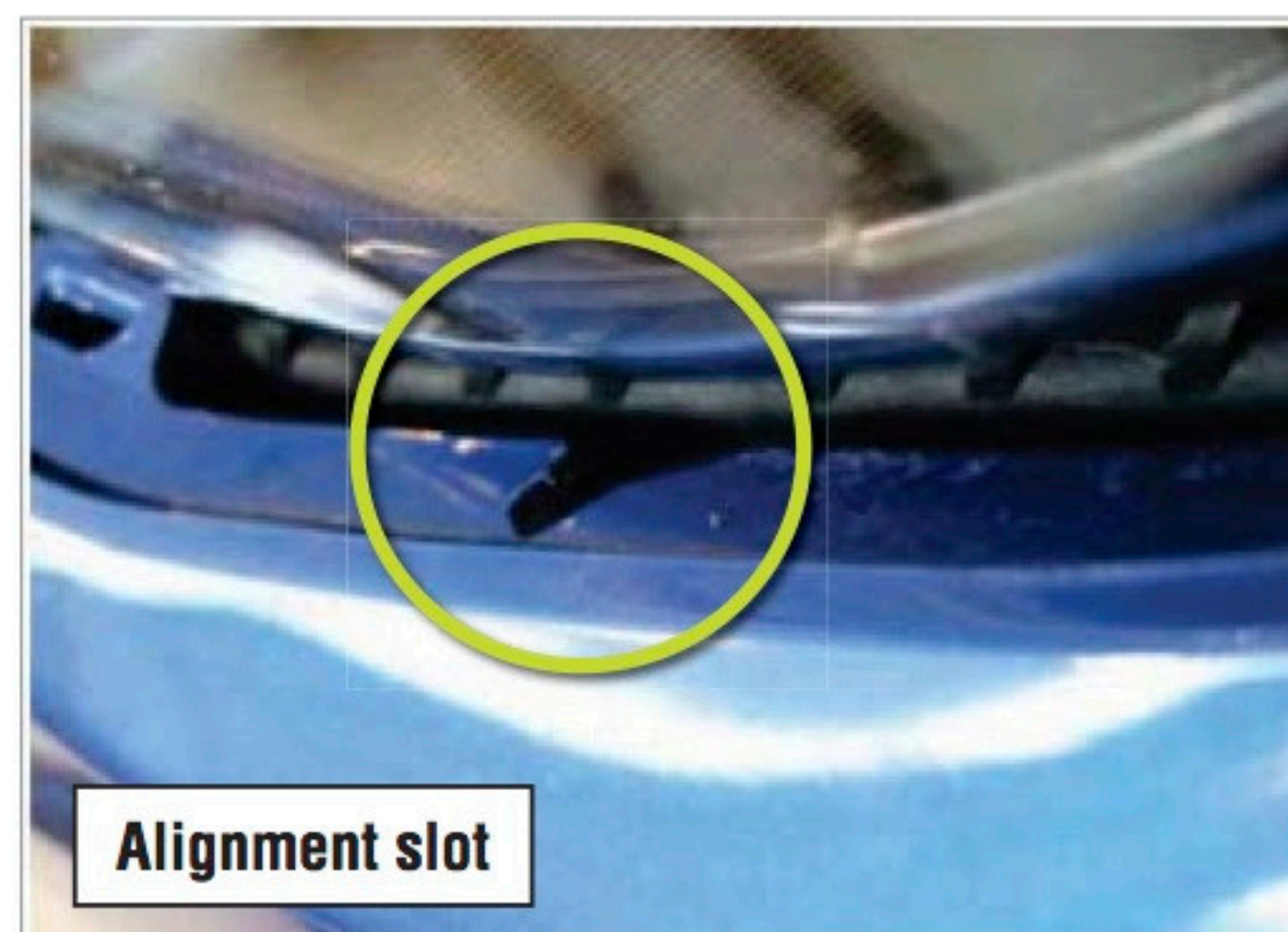
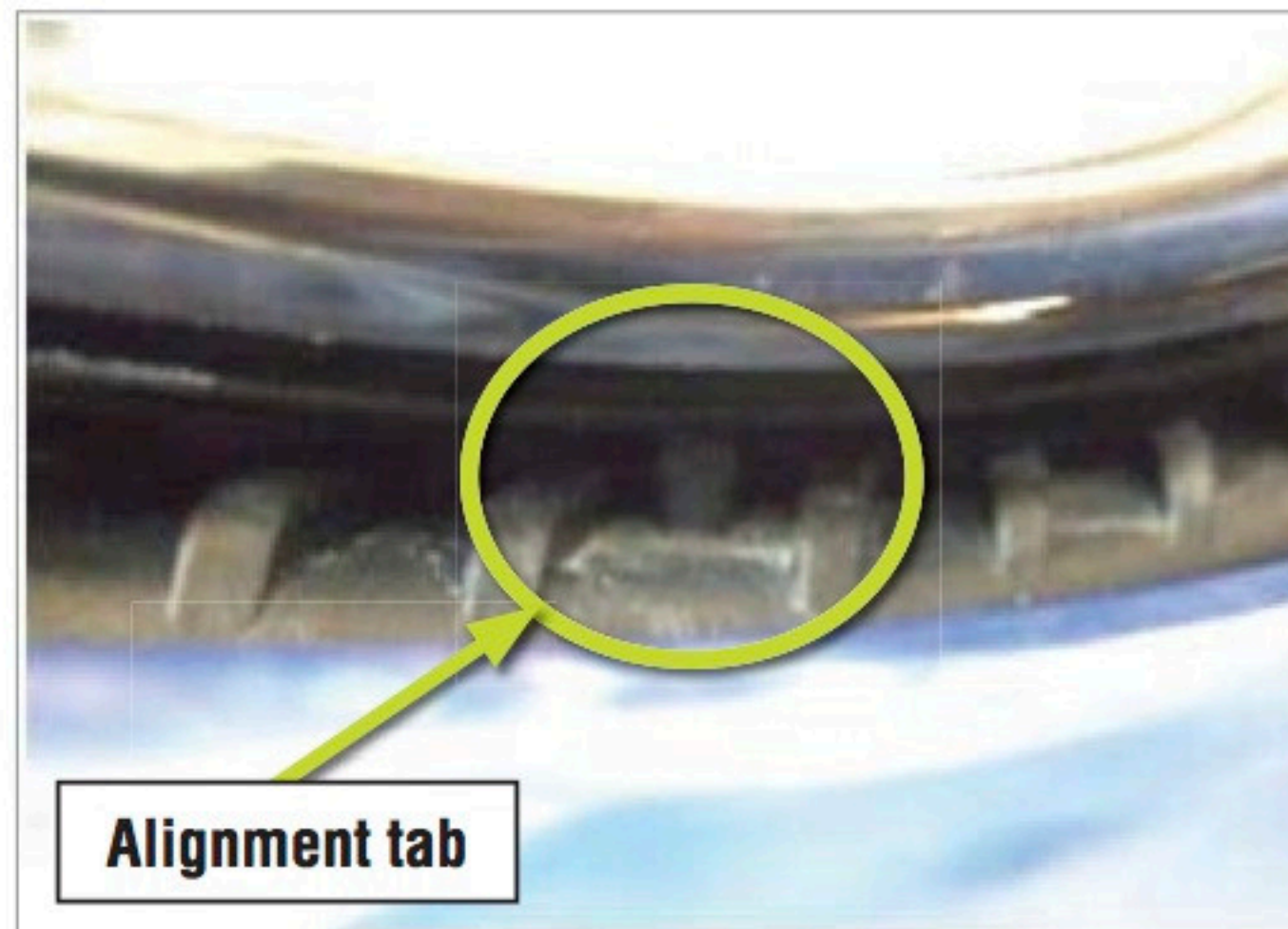
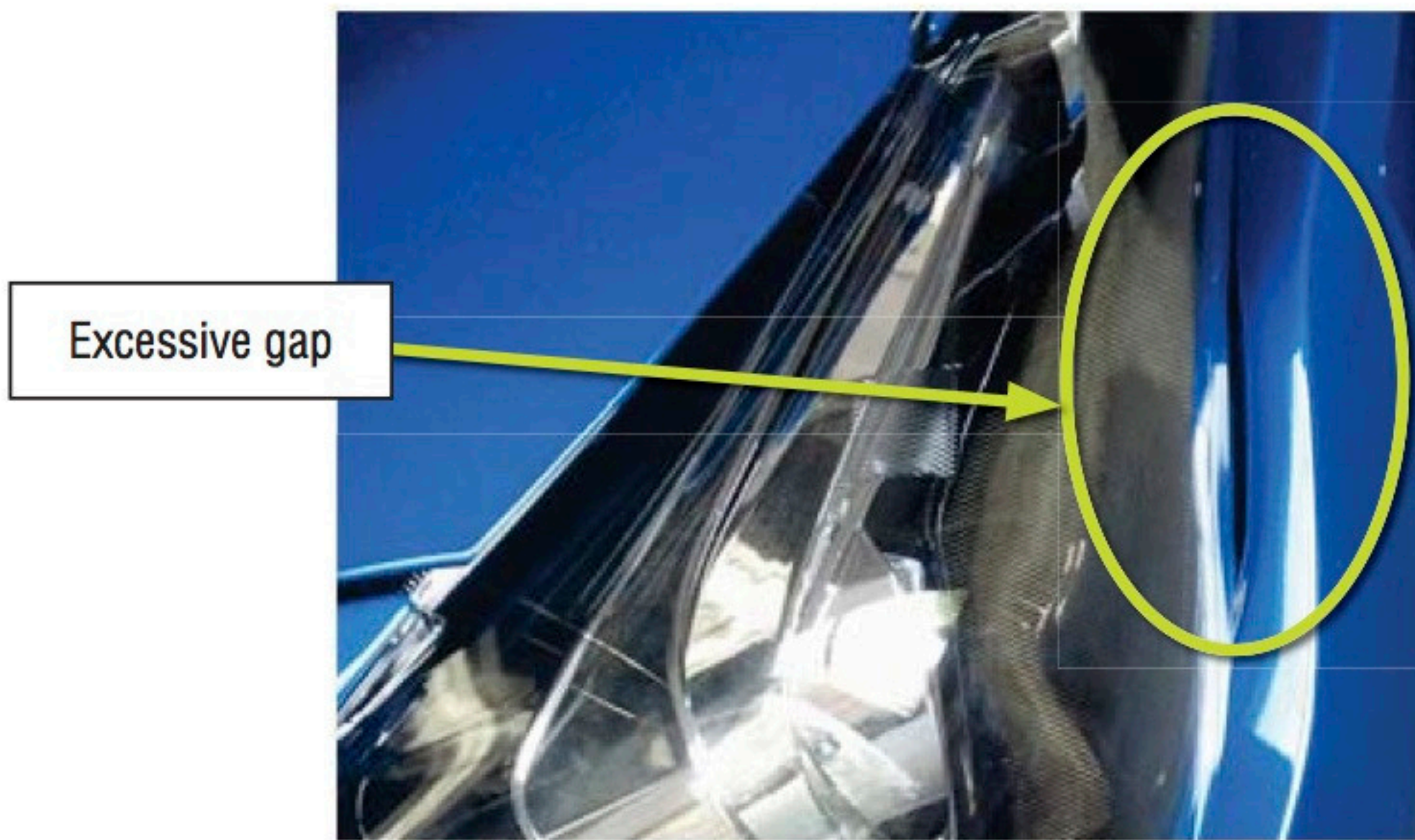
**CAUTION: VEHICLE SERVICING PERFORMED BY UNTRAINED PERSONS COULD
 RESULT IN SERIOUS INJURY TO THOSE PERSONS OR TO OTHERS.**

Subaru Service Bulletins are intended for use by professional technicians ONLY. They are written to inform those technicians of conditions that may occur in some vehicles, or to provide information that could assist in the proper servicing of the vehicle. Properly trained technicians have the equipment, tools, safety instructions, and know-how to do the job correctly and safely. If a condition is described, DO NOT assume that this Service Bulletin applies to your vehicle, or that your vehicle will have that condition.

**SUBARU OF AMERICA, INC. IS
 "ISO 14001 COMPLIANT"**

The international standard for excellence in Environmental Management Systems. Please recycle or dispose of automotive products in a manner that is friendly to our environment and in accordance with all local, state and federal laws and regulations.

The photo below shows an excessive headlight gap which results when the alignment tab of the mounting bracket is not properly engaged into the alignment slot molded into the top rear edge of the bumper fascia.



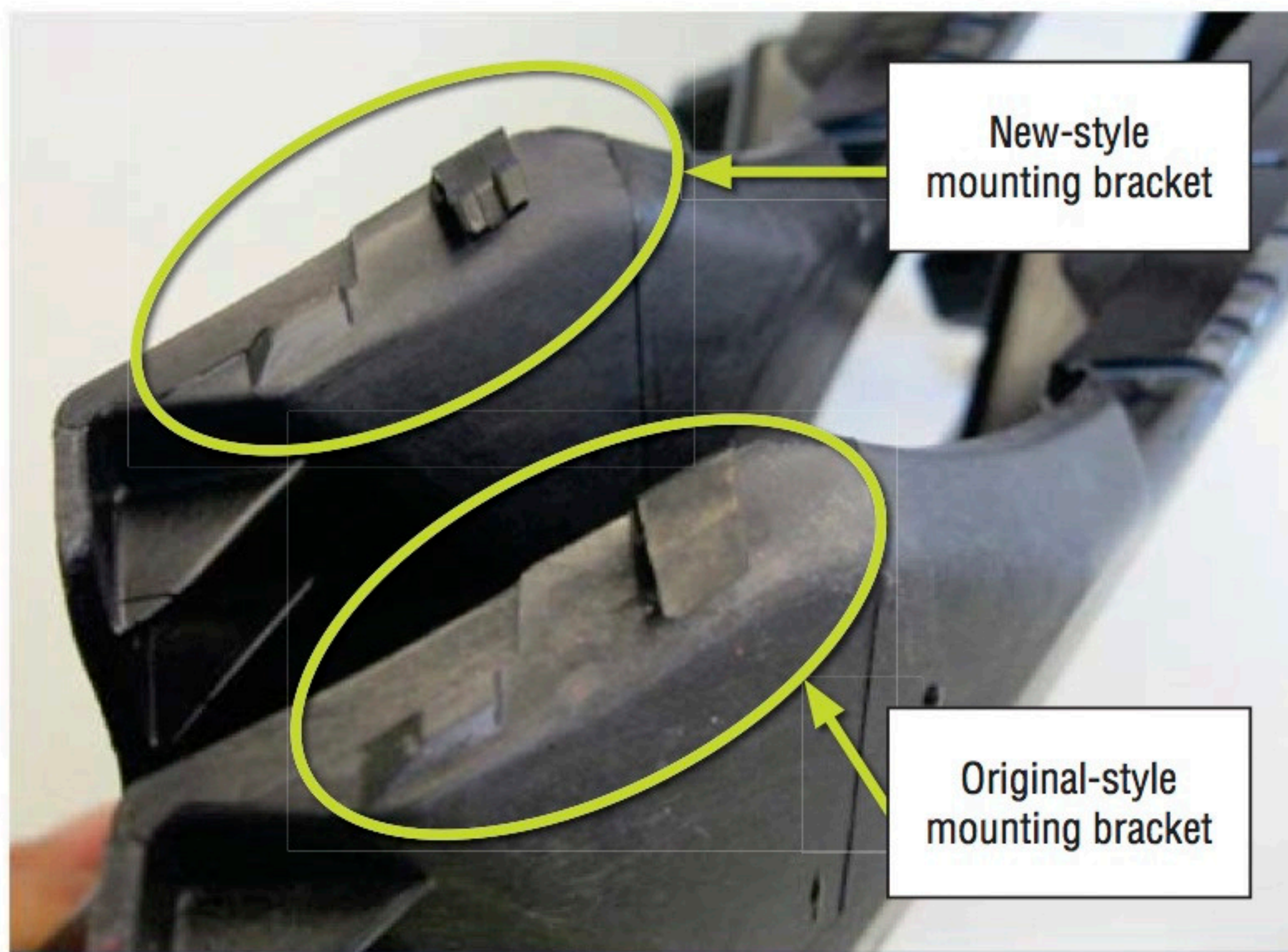
The middle photo above shows the alignment tab portion of the mounting bracket under the center of the headlight. The photo directly above shows the alignment slot which is molded into the rear edge of the bumper fascia. The tab must fit into the slot **completely** for proper fit and alignment.

Continued...

Follow the procedure outlined in the applicable Service manual for accessing and removing the bumper fascia mounting brackets. **NOTE:** Refer to Service Bulletin 07-68-12 for more information on removing the side marker lamps **BEFORE** attempting to remove them. The reference photo below shows the bumper fascia removed and a new mounting bracket installed.

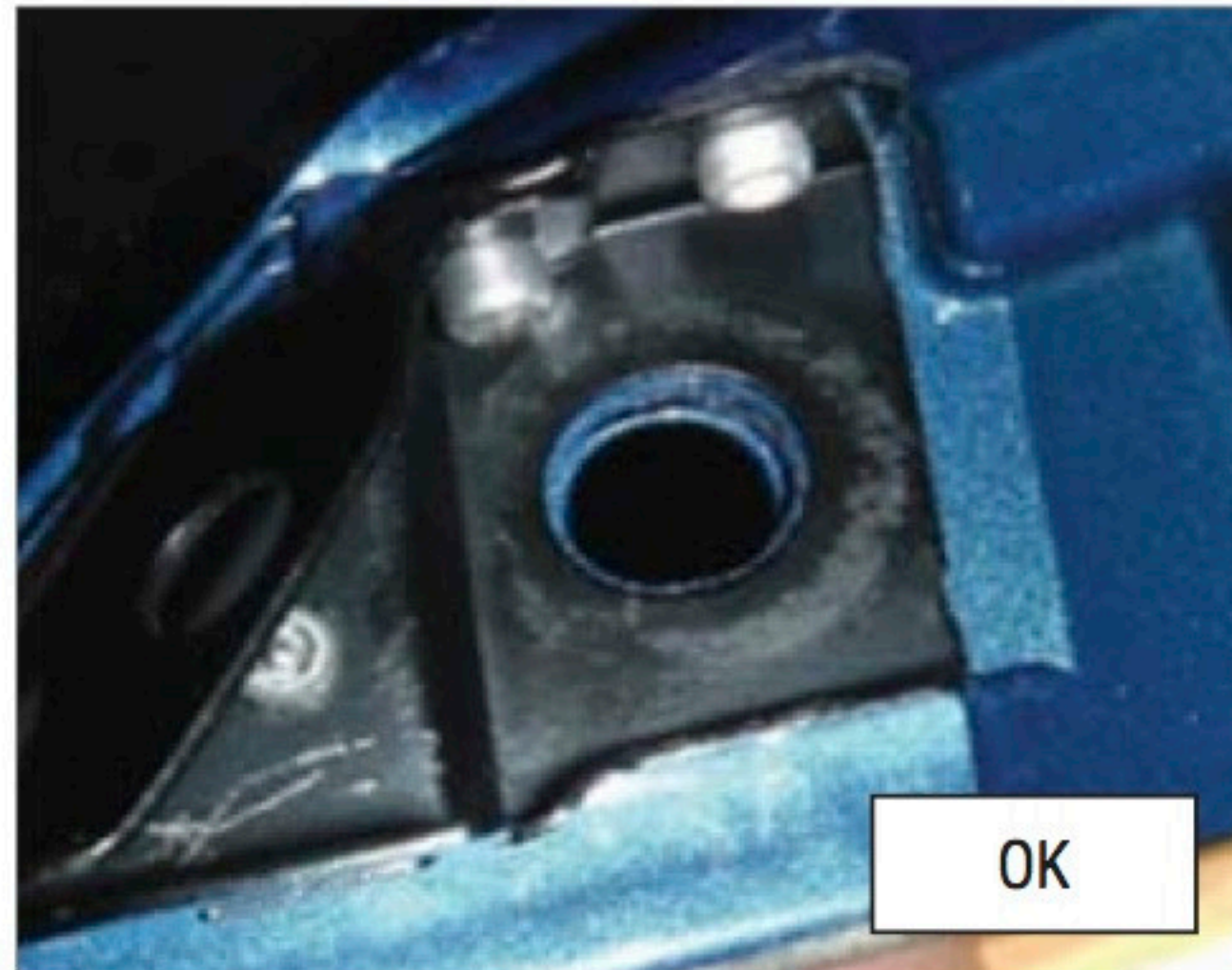


The design of the bracket has been revised to provide increased retention capabilities for the bumper fascia. Shown below is a comparison between the original-style bracket and the new-style.



Continued...

After removal of the bumper fascia, inspect all the retention points for any indications of damage or distortion. Damaged or distorted retention points may not allow for sufficient retention and may require bumper fascia replacement. When re-installing the bumper fascia, start by confirming the tabs on the mounting brackets fit properly into the alignment slots on the rear edge as shown in the photos on pg. 2. Then, starting in the center of the vehicle, confirm proper engagement of all attachment points as you work your way around toward each side marker lamp.



Looking up from below the fascia's rear attachment point, proper installation is confirmed when the holes the retaining clip fits into are all properly aligned as shown in top photo above. The photo directly above shows misalignment which is indication of an attachment point which is most likely still out of place. Keep in mind, there are three layers of material this retaining clip has to go through; first, the steel mounting bracket, the plastic bumper fascia itself and then the mounting flange of the fender.

Once the bumper fascia is aligned and properly secured, re-install the hood seal and retainer along with the engine under guard (if loosened or removed). Give the final fit one last inspection for any remaining gaps then, install side marker lamps and fender well liners (see 07-68-12 regarding marker lamp / liner installation) to complete the repair.

WARRANTY / CLAIM INFORMATION

For vehicles within the Basic New Car Limited Warranty period, refer to the Subaru Warranty Wizard® for claim submission information.