



SUBARU

SERVICE BULLETIN

No. SB17-067

(SUBARU Ref. No. U2017-067)

Issued: (july/27/2017)

SUBARU Corporation. Overseas Service Dept.
Ebisu Subaru Bldg. 1-20-8, Ebisu , Shibuya-ku Tokyo
150-8554, Japan

Subject:	The countermeasure against the internal oil leakage of the “VALVE ASSEMBLY-OIL CONTROL”
Applicable part category in service manual:	Engine>FUEL INJECTION (FUEL SYSTEMS)(H4DO) > Oil Control Solenoid
Applicable Parts name in Subaru Fast:	“VALVE ASSEMBLY-OIL CONTROL”
Foreword:	This service bulletin is to inform you of the countermeasure part against the internal oil leakage of the “VALVE ASSEMBLY-OIL CONTROL” of the FB/FA engine.

1.Affected Carline

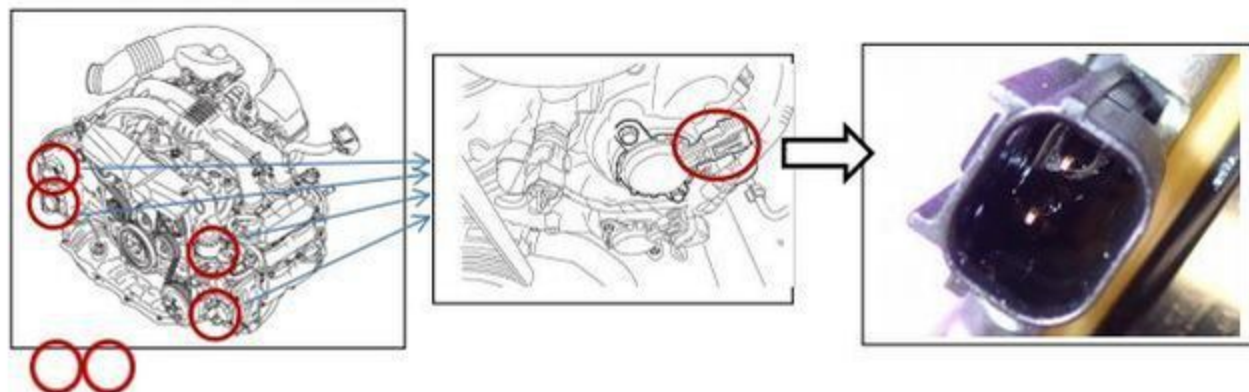
Affected carline	Specifications	MY
LEGACY / OUTBACK	ALL with FA/FB type engine	2013 to 2017
IMPREZA / XV	ALL with FA/FB type engine	2012 to 2017
FORESTER	ALL with FA/FB type engine	2011 to 2017
WRX	ALL with FA/FB type engine	2015 to 2017
LEVORG	ALL with FA/FB type engine	2016 to 2017
BRZ	ALL with FA/FB type engine	2013 to 2017

This information is applicable to SIA production models.

2. Description of Symptom and Improvement

Symptom	Details
The some certain vehicles may have an oil contamination on the connector of the “VALVE ASSEMBLY-OIL CONTROL”.	The cause may be the internal oil leakage from the oil seal; of the “VALVE ASSEMBLY-OIL CONTROL”. The countermeasure part has a new oil seal.

2-1 Detail of the Symptom.

**3. Production change information (Starting vehicle number)**

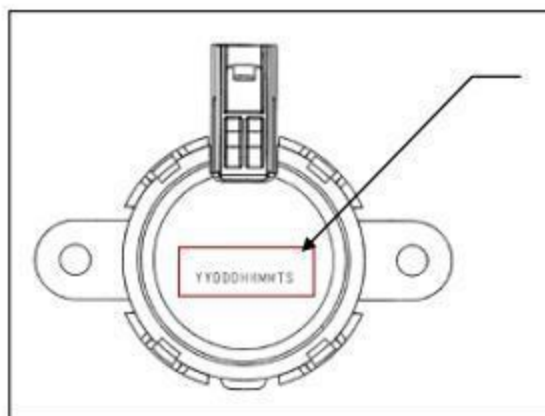
Applicable Model	Market / Specifications			Starting vehicle number
LEGACY OUTBACK	North America	Sedan	LHD	TBD
		Wagon	LHD	TBD
	Europe and General	Sedan	LHD	JF1BN9LC2HG018077
		Wagon	LHD	JF1BS9LC2HG122591
		Sedan	RHD	JF1BN9KC2HG019407
		Wagon	RHD	JF2BS9KC2HG064841
IMPREZA	North America	Sedan	LHD	TBD
		Wagon	LHD	TBD
	Europe and General	Sedan	LHD	JF1GK2LC9HG003689
		Wagon	LHD	JF1GT3LC5JG010289
		Sedan	RHD	JF1GK3KC5HG004431
		Wagon	RHD	JF1GT3KC5JG017730
XV	North America	Wagon	LHD	TBD
	Europe and General	Wagon	LHD	JF1SJ9LC5HG342729
		Wagon	RHD	JF1GP7KA3HG206940
FORESTER	North America	Wagon	LHD	JF2SJAAC7JH425420
	Europe and General	Wagon	LHD	JF1SJ9LC5HG342729
		Wagon	RHD	JF2SJ9KC5HG093334
WRX	North America	Sedan	LHD	JF1VA1A67J9807386
	Europe and General	Sedan	LHD	JF1VAGL63JG013451
		Sedan	RHD	JF1VAGK85JG019570
LEVORG	Europe and General	Wagon	LHD	JF1VM4K55JG006206
		Wagon	RHD	JF1VM4L55JG015682
BRZ	North America	Coupe	LHD	JF1ZCAB19H9604945
	Europe and General	Coupe	LHD	JF1ZC6K81HG012892
		Coupe	RHD	JF1ZC12A7H9012072

4. Parts Information and Interchangeability

No	New Parts		Interchangeability	Old Parts	Remarks
1.	Part No.	10921AA231	New part to Old car: <u>Yes</u> Old part to New car: <u>No</u>	10921AA230	For FB25, FB20 FB16 (NA) types
	Part name	"VALVE ASSEMBLY-OIL CONTROL"		"VALVE ASSEMBLY-OIL CONTROL"	
	Note				
2.	Part No.	10921AA241	New part to Old car: <u>Yes</u> Old part to New car: <u>No</u>	10921AA240	For FA20 FA20 DIT FB16 DIT types
	Part name	"VALVE ASSEMBLY-OIL CONTROL"		"VALVE ASSEMBLY-OIL CONTROL"	
	Note				
3.	Part No.	10921AA23B	New part to Old car: <u>Yes</u> Old part to New car: <u>No</u>	10921AA23A	For SIA production FB25 FB20 types
	Part name	"VALVE ASSEMBLY-OIL CONTROL"		"VALVE ASSEMBLY-OIL CONTROL"	
	Note				

4-1 Confirm the lot number of the "VALVE ASSEMBLY-OIL CONTROL"

Please confirm the lot number of the "VALVE ASSEMBLY-OIL CONTROL" as follow.



This 11 digits number means a production time stamp "YYDDHHMMTS". The countermeasure part is 17159***** and after.

6. Working Procedure

6-1 Replace the "VALVE ASSEMBLY-OIL CONTROL" with the new one. Please refer to the service manual

6-2 Check the conditions of the connector, the harness and other parts. If you find the oil on these parts, please replace them with new ones..

7. Labor Time

The labor time is compliant with the SUBARU CORPORATION standard Labor time.

END

CAUTION: VEHICLE SERVICING PERFORMED BY UNTRAINED PERSONS COULD RESULT IN SERIOUS INJURY TO THOSE PERSONS OR TO OTHERS.

Subaru Service Bulletins are intended for use by professional technicians ONLY. They are written to inform those technicians of conditions that may occur in some vehicles, or to provide information that could assist in the proper servicing of the vehicle. Properly trained technicians have the equipment, tools, safety instructions, and know-how to do the job correctly and safely. If a condition is described, DO NOT assume that this Service Bulletin applies to your vehicle, or that your vehicle will have that condition.